

The WEBSITE of the Project - Four (4) Applications in One (1) Instrument

One of the main activities of project was the development of the IMPACT website. It was used to present the project aims and activities and to disseminate its products. Importantly, it also supported the online surveys and online teacher education (Figure 1). IMPACT website is an online instrument collecting data and providing instant updated information with free access to policy makers, PE teachers and researchers. Teachers and students are able to receive useful personal feedback. The instrument can provide Instant updated information about schools and students. THERE WILL BE easy access to always updated information about schools with low levels of sport involvement and high levels of inactivity. Moreover, they do not know the extent to which the low levels of sport involvement in some schools is due to youth's economic problems to participate in sport. PE teachers could always collect information about pupils' sport involvement and they rarely connect pupils' inactivity with barriers to participate in sport.

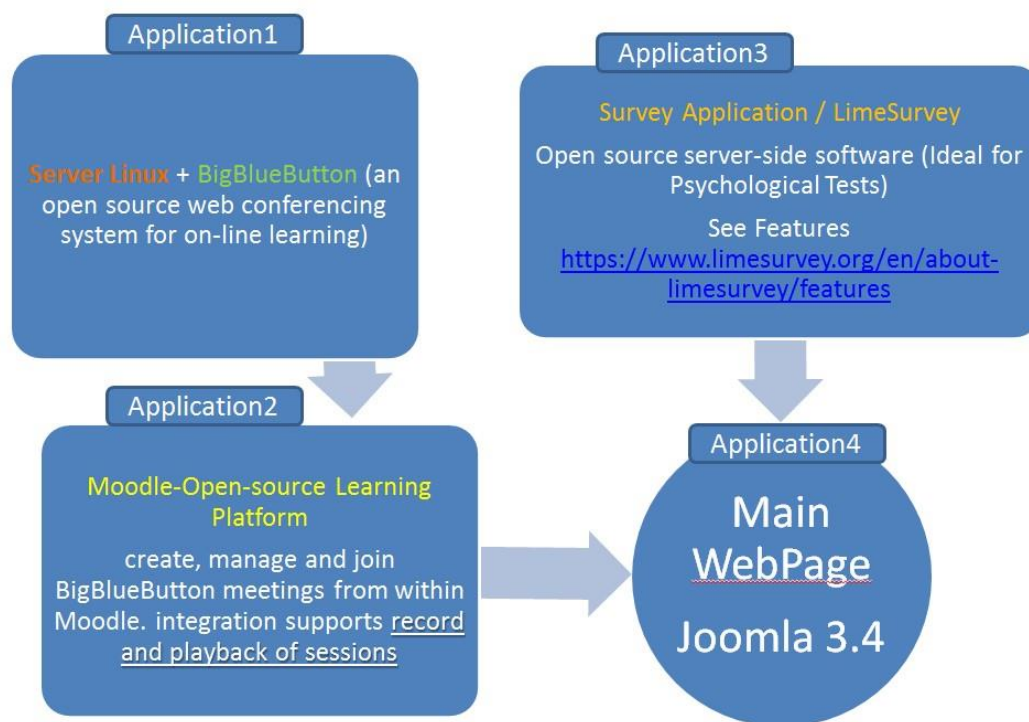


Figure 1. Structure of the IMPACT project website

An open source web conferencing system for distance education was used in order to provide real-time desktop sharing, presentation, VoIP, webcam and chat. It supports multiple audio and video sharing, presentations with extended whiteboard capabilities - such as a pointer, zooming and drawing - public and private chat, desktop sharing,

integrated VoIP, and support for presentation of PDF documents and Microsoft Office documents (Application 1). Moreover, users may enter the conference in one of two roles: viewer or moderator. Also, it has the capability to create video files of the recording. These video files are playback on the desktop and laptop devices. The playback of a video includes the chat messages to the right (Photo 1).

An open source eLearning platform (wordpress) used in order to full intergrade with bigbluebutton webserver (Application 2). From wordpress web conferencing system created meetings. All these sessions have been recorded and saved in our bigbluebutton webserver (Photo 2).

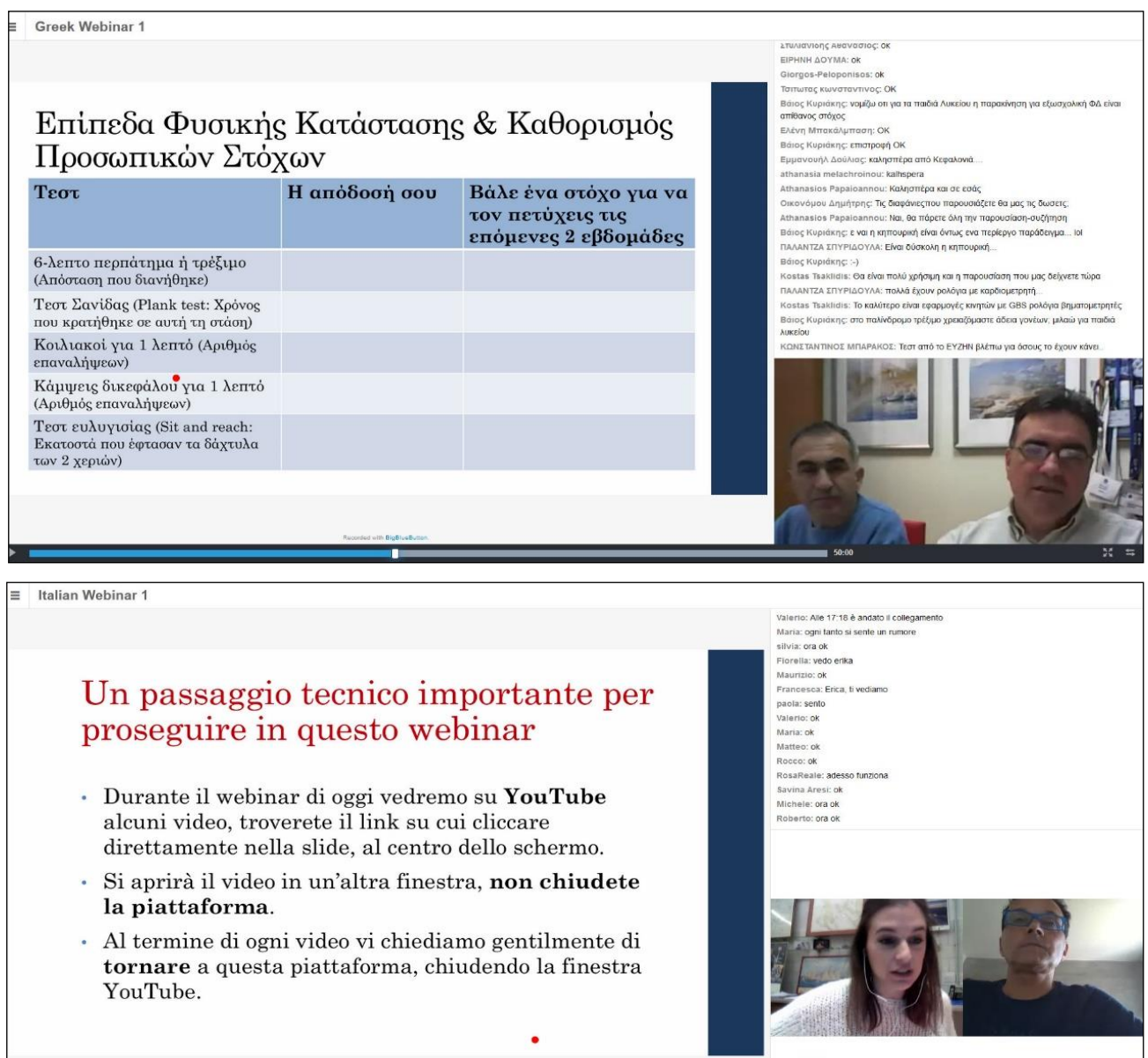
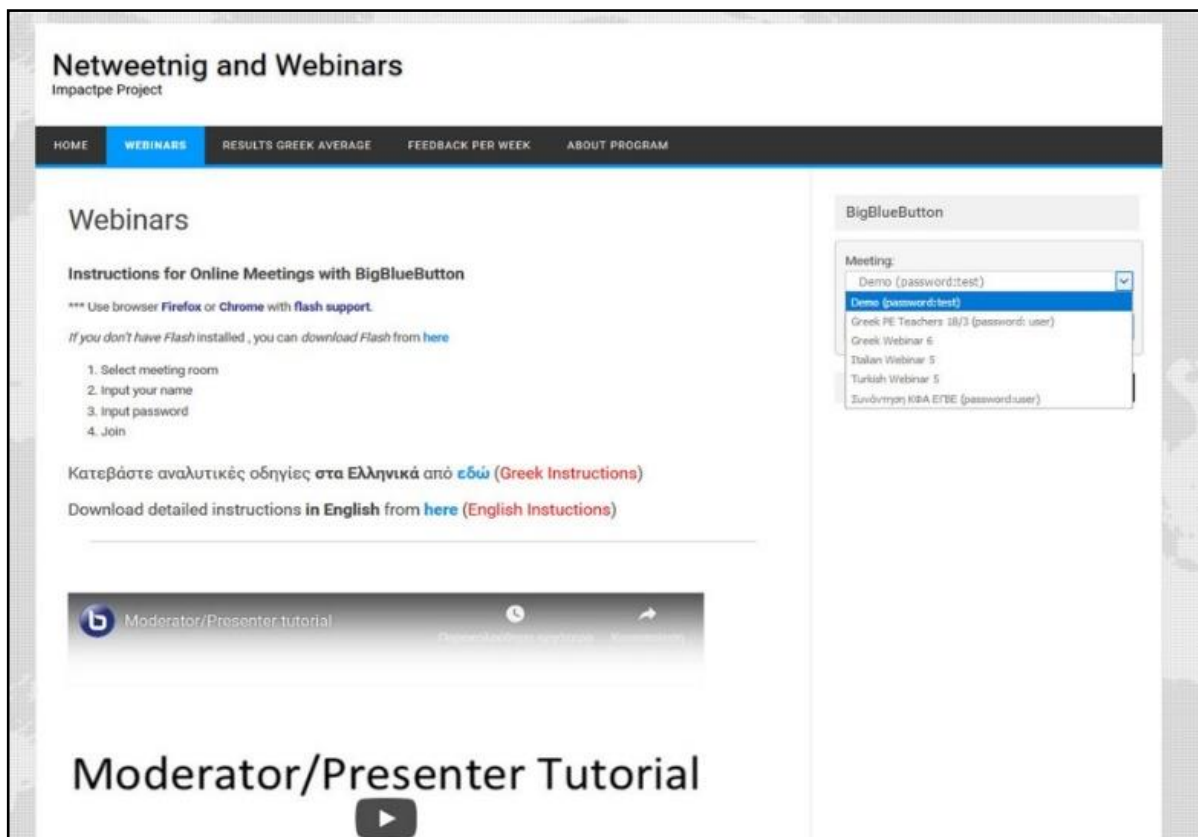


Photo 1. Example of a delivered webinar in Greece and Italy

Survey Tool (Lime Survey) is a free and open source on-line survey application written in PHP and based on a MySQL database (Application 3). As web server-based software, it enables users using a web interface to develop and publish on-line surveys, collect responses, create statistics, and export the resulting data to other applications. LimeSurvey has no limit on the number of surveys a user can create, nor is there a limit on how many participants can respond. Aside from technical and practical constraints, there is also no limit on the number of questions each survey may have. LimeSurvey is multilingual and provides basic statistical and graphical analysis of survey results (Photos 3 & 4).



The screenshot displays the 'Netweetnig and Webinars' web interface. At the top, there is a navigation bar with links for HOME, WEBINARS, RESULTS GREEK AVERAGE, FEEDBACK PER WEEK, and ABOUT PROGRAM. The main content area is titled 'Webinars' and includes 'Instructions for Online Meetings with BigBlueButton'. These instructions specify using Firefox or Chrome with flash support and provide a list of steps: 1. Select meeting room, 2. Input your name, 3. Input password, and 4. Join. There are links for Greek and English instructions. A video player for a 'Moderator/Presenter tutorial' is visible. On the right side, a 'BigBlueButton' panel shows a 'Meeting:' dropdown menu with several options, including 'Demo (password:test)' which is currently selected.

Photo 2. BigBlueButton webserver



Photo 3. Lime Survey tools (n = 64)

Charger un questionnaire non terminé

IMPACT 2018 final FRENCH below age 13 - T2

INSTRUCTIONS
 S'il te plaît réponds à toutes les questions aussi honnêtement et soigneusement que possible. Il n'y a pas de bonnes ou de mauvaises réponses, marque vraiment ce que tu ressens. Si quelque chose n'est pas clair pour toi, demande de l'aide en levant la main, le responsable viendra t'aider.
 Nous sommes intéressés par les activités physiques et sportives que tu peux pratiquer durant les cours d'éducation physique (SEP) et pendant ton temps libre ; en particulier, ce que tu penses de ces activités et ce que tu ressens quand tu les pratiques en SEP ou durant ton temps libre.

Il y a 31 questions dans ce questionnaire.

Suivant

Écris ta date de naissance ici.

Veux-tu compléter toutes les champs de la date.
 Cette question est obligatoire

Jour Mois Année

Par exemple, si tu es né(e) le 15 décembre 2002, écris 15 / 12 / 2002

Quel âge as-tu ? (S'il te plaît, écris ton âge en années)

Seuls des nombres peuvent être entrés dans ce champ.
 Cette question est obligatoire

ans

Sexe :

Prends soigneusement une réponse (à choisir)
 Cette question est obligatoire

Un garçon

Une fille

Autre Réponse

Je ne veux pas répondre

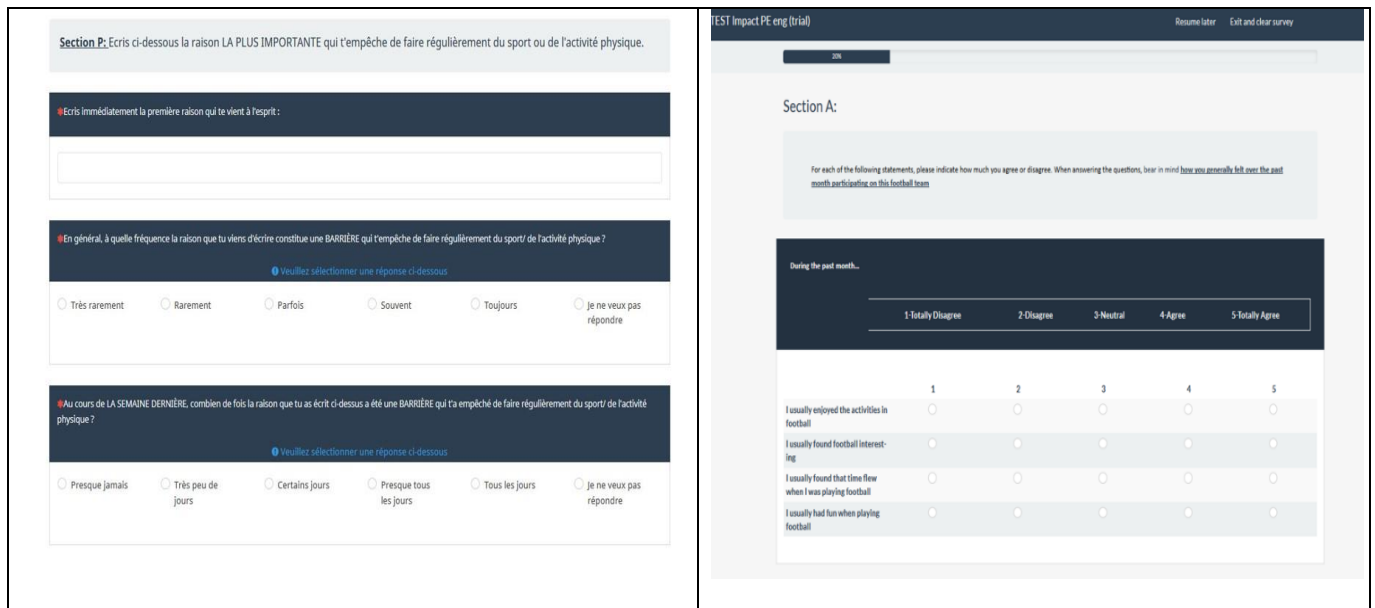


Photo 4. Example of Survey tools

The ImpactPE main webpage is actually the main connector between other 3 applications (Application 4). Within **ImpactPE website** are stored lot information about the program and partners. There is also a visual connection to data that have been created or stored from other three applications. These connections are available via site menu and provide access to:

- ImpactPE **Forum**, a forum created by open source platform phpBB and supports **4 countries** discussion forum,
- Multilingual Survey List (**64 surveys in 6 languages** with stored answer data),
- Webinars recorded by synchronous conferencing system BBB (**35 recorded webinars in 4 languages**; Photo 5).

The number of teachers, pupils and total surveys created for IMPACT Project are presented in Tables 1, 2 and 3, respectively.

Table 1. Number of Teacher’s Surveys created

Teachers’ Surveys		
Countries	Questionnaires	Total Participants
4	21	1476

Table 2. Number of Pupils’ Surveys created

Pupils’ Surveys			
	Countries	Questionnaires	Total Participants
Pilot study	6	6	1994 + 247 on paper
Feedback (T1 - T2)	4	16	1970

T1 Measure	6	15	10294
T2 Measure	4	12	4965

Table 3. Number of Total Surveys created

Total Surveys		
Countries	Questionnaires	Total Participants
6	64	20946

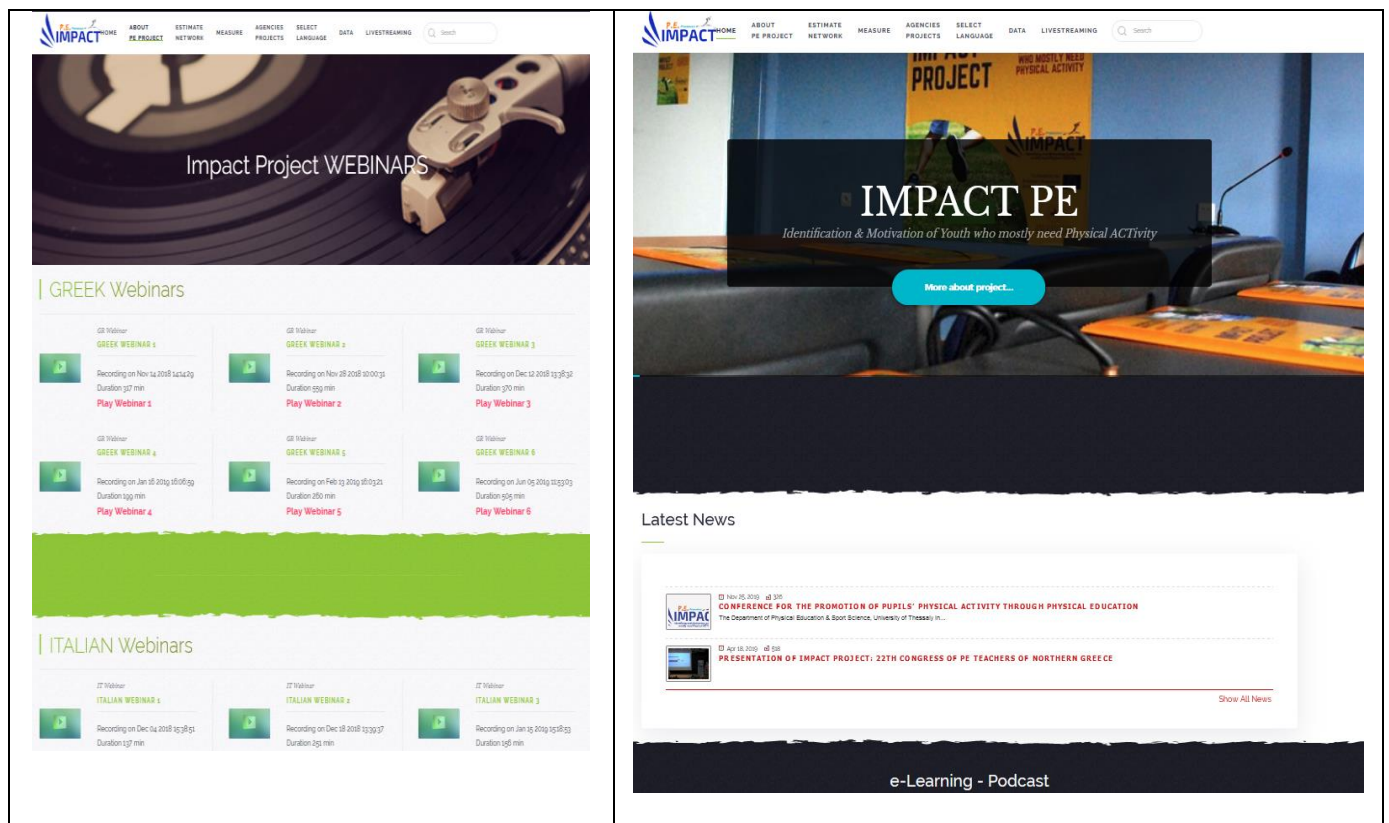


Photo 5. Example of recorded webinars